



PAK RED CRESCENT MEDICAL & DENTAL COLLEGE

PROSPECTUS

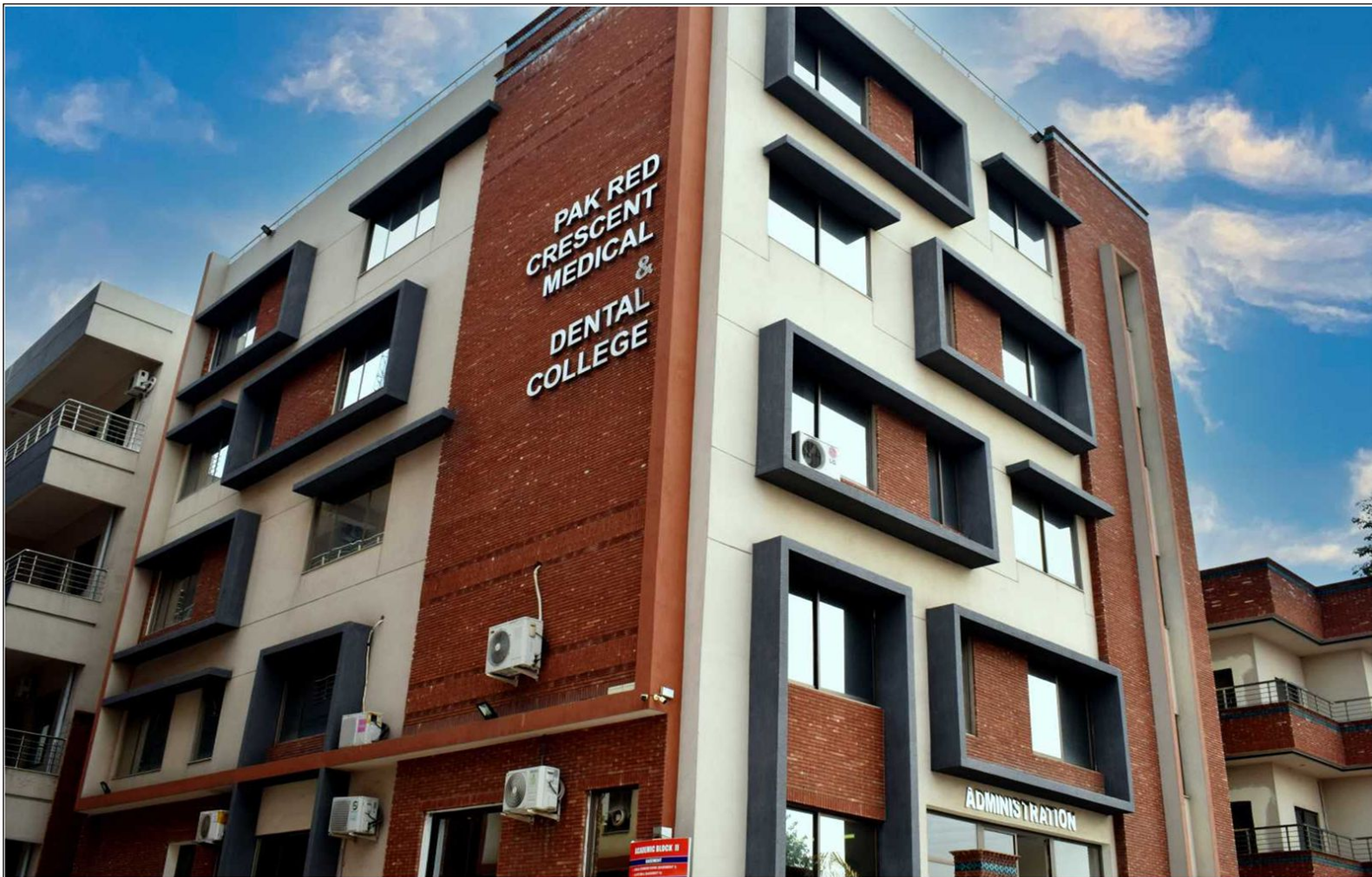
Session 2024-2025

Recognized by
Pakistan Medical & Dental Council



Affiliated with
University of Health Sciences





PAK RED CRESCENT MEDICAL & DENTAL COLLEGE

Pak Red Crescent Medical & Dental College is owned by Pak Red Crescent Society Punjab, which is part of International Red Cross. The society is running a lot of projects in Pakistan like PRCM&DC, Blood Banks, Thalassemia centres and projects for disaster management. PRCM&DC is administered by the Board of Governors. PRCM&DC is a purpose built campus on main Multan Road, Lahore. The hospital provides free treatment to all the deserving patients. To facilitate faculty and students the college and hospital are on the same premises with separate buildings.



**PAK RED CRESCENT MEDICAL
& DENTAL COLLEGE**

Contents

Page

Board Of Governors	01
Message from the Chairman PRCS Punjab	02
Message from the Principal PRCM & DC	03
Vision Mission & Values	04
Strengths	05
Affiliation	06
Outcomes of Five years MBBS Program:	07
Pak Red Crescent Medical & Dental College, Lahore	08
Pak Red Crescent Teaching Hospital	09
MBBS Courses of Study	10
Clinical Services	11
Basic Departments	12
Clinical Department	17
The Faculty	27
The Administration	28
Hostel Facilities	29
Timings of Hostels	31
Library	32
Co-Curricular Activities	34
Gallery	35
Admissions	39
Fee Schedule for Local & Foreign Students	40
Subsequent Fee	41
Examinations:	42
Discipline	43
Admission Form	44
Code of Conduct / Dress Code	45
Pakistan Red Crescent Society	46



Board Of Governors

The Board of Governors of Pak Red Crescent Medical & Dental College and Teaching Hospital comprises of the following members:

Justice (R) Sh. Ahmad Farooq	Chairman
Mr Arif Suriya	Member
Prof. Dr Mahmood Shaukat	Member
Mr Liaqat Ali Chishti	Member
Dr Shoukat Ali	Member
Mr Abdul Majid Ch	Member
Mr Mehboob Qadir Shah(Co-Opted legal community)	Member
Secretary PRCS Punjab	Member
Principal PRCM&DC	Member





Justice (R) Sheikh Ahmed Farooq
Chairman Pakistan Red Crescent Society
Punjab Provincial Branch

The Pak Red Crescent Medical and Dental College, situated at 48 KM Multan Road, Lahore (Dina Nath), was established in the year 2012 by the Pakistan Red Crescent Society Punjab Provincial Branch, which was created in Pakistan on December 20, 1947 by Quaid-e-Azam Muhammad Ali Jinnah as Governor General of Pakistan and Founding President of the Society. The Red Cross Society Act 1920 was renamed as Pakistan Red Crescent Society Act by the Parliament through Act No. XIV of 1974. The Society is a member of the International Committee of Red Cross (ICRC) and International Federation of Red Cross and Red Crescent Societies (IFRC).

Pakistan Red Crescent Society is committed to make positive contributions for improvement of health facilities and alleviation of human sufferings by providing relief and succor to the victims of natural and man-made disasters. Pursuant to the aims and objectives of the International Red Cross / Red Crescent Movement, Pakistan Red Crescent Society Punjab Provincial Branch established a Medical College along with a Teaching Hospital in order to impart medical education of highest standards to the students so that professional and competent doctors equipped with ethical & moral values and committed to serve the humanity could be provided to the society.

The Pak Red Crescent Medical and Dental College is registered and recognized by Pakistan Medical Commission, Islamabad and affiliated with University of Health

Sciences, Lahore. It has highly experienced and outstanding faculty along with a teaching hospital in the same premises which is recognized by the Punjab Health Care Commission. The facility of separate Girls' and Boys' Hostels are available in the premises. The College and the Hospital are fully equipped with latest scientific instruments / apparatus including but not limited to CT Scan machine, ICU, CCU, Emergency Ward, state of the art labs and digital library.

The distinguishing feature of the Pak Red Crescent Medical & Dental College is that it is not owned or being run by some private entity i.e. an industrialist or a private doctor. On the contrary, an internationally recognized humanitarian organization i.e. Pakistan Red Crescent Society Punjab Provincial Branch is managing the affairs and providing full cooperation and support to the Medical College for ensuring quality of education to the students and provision of best health care to the patients.

It is a matter of great pride for me to extend my facilitations and warm welcome to the new entrants of 1st year MBBS class. It is my earnest desire that all students, who graduate from this institution bring a good name to the College and get a recognition through their positive contribution in the field of medicine.





Prof. Dr. Khalid Javed Rabbani Principal Pak Red Crescent Medical & Dental College

Pak Red Crescent Medical and Dental College (PRCM&DC) is a private sector illustrious institution which has achieved a prominent fame over a short span of time for offering contemporary medical and dental education through rigorous academic and well organized mentorship programs. The college was established in 2012 by Pak Red Crescent Society. The Pak Red Crescent Society is affiliated with the International Red Cross Society, recognized for its professional services for the deprived patients across many countries. Hall mark of this institution is its diverse and well experienced faculty including some distinguished professors. We believe in both holistic and contextual medical education, encircling academic, co-curricular, creative and intellectual skills development in our students. We address the global challenges and aim to lead our students to the road of enlightenment so that they flourish in an atmosphere of elegance and dignity. We particularly emphasize on innovative research and professional development amongst our students. We have an affiliated tertiary care hospital which offers quality health services to the deprived patients of surrounding community. As a Principal I feel gratified to lead this institution's with a commitment to improve the health care of community through excellence in professional medical education, patient care and biomedical research. We look forward to prepare our students to meet the challenges of tomorrow.

VISION

Aspire to become the center of excellence in the field of medical sciences, focusing on research, character building and professional development.

MISSION

To produce competent and professionally sound medical graduates, equipped with ethical and moral values, committed to serve the community.

VALUES

- Integrity
- Transparency
- Quality
- Excellence
- Team Work
- Professionalism
- Compassion



Strengths

- Outstanding faculty and conducive academic environment.
- Purpose-built campus and hospital within the same premises.
- Separate girls' and boys' hostels in the college premises.
- Well secured and disciplined environment.
- Pak Red Crescent teaching hospital is recognized by Punjab Health Care Commission
- The college academic council comprises Professors and Heads of all the Basic & Clinical departments, chaired by the Principal. The council is the apex body which monitors and regulates curriculum, extracurricular programs of the college, ensures compliance with the rules & Regulations of PMDC/UHS and all other matters related to education and training at PRCM & DC/TH.
- Institute of Allied Health Sciences is a part of this institution .
- **The students of PRCM & DC have secured 24 distinctions in various subjects, in last six years.**



Affiliations

- **Recognized by & Registered with Pakistan Medical & Dental Council, Islamabad, Pakistan.**
- **Affiliated with University of Health Sciences, Lahore**
- Approved by the Ministry of Health, Government of Pakistan.
- Listed in International Medical Education Directory.
- Listed in the Institutions sponsored by ECFMG for PLAB, USMLE including Pathway 3.
- FAIMER



FAIMER®



Outcomes of Five years MBBS Program:

By the end of five years MBBS program the graduate will be able to:

Application of knowledge

1. Apply biomedical scientific principles, methods and knowledge to medical practice and integrate these into patient care and clinical decision-making.
2. Apply knowledge and skills in a competent, ethical and professional manner and taking responsibility for their own actions in complex and uncertain situations.

Communication and Interpersonal skills

3. Communicate effectively, openly and honestly with patients, their relatives, and with colleagues. And apply patient confidentiality appropriately.
4. Carry out an effective discussion with a patient.

Diagnosis and medical management

5. Perform a range of diagnostic, therapeutic and practical procedures safely and effectively, and identify, according to their level of skill and experience, the procedures for which they need supervision to ensure patient safety.
6. Prescribe medications safely, appropriately, effectively and economically and be aware of the common causes and consequences of prescribing errors.

Teamwork and collaboration

7. Work collaboratively with patients and colleagues to diagnose and manage clinical presentations safely in the community, primary and secondary care settings and in patients' homes.

Health promotion and illness prevention

8. Apply the principles, methods and knowledge of public health to improve the quality and provision of healthcare to general public.

Clinical research and scholarship

9. Apply scientific method and approaches to medical research and integrate their research with day to day management of patients.



PAK RED CRESCENT MEDICAL & DENTAL COLLEGE, LAHORE

- Area More than 6 acres
- Departments
- Cafeteria
- Library/ Learning resource centre
- Administration
- Day care centre
- Auditorium
- Playground
- Common rooms separate for girls and boys
- Separate hostels for girls' and boys'
- Lecture theatre complex



PAK RED CRESCENT TEACHING HOSPITAL



It is a 500 bedded hospital located on Multan road in outskirts of Lahore. The hospital is functioning under the supervision of an experienced and devoted team of professionals. The hospital has separate Outdoor, Indoor and Accident & Emergency blocks with all essential facilities and related staff.

The hospital has five modernized Operation Theaters in the main OT complex along with two separate operating rooms in A&E Block.

INDOOR BLOCK

- **Medicine and Allied**, Psychiatry, Dermatology, Cardiology, Gastroenterology, Rheumatology, Pulmonology,
- **Surgery and Allied**, Orthopedic, Pediatric Surgery, Urology, Anesthesia
- **Accident & Emergency 24/7**
- **Gynaecology & Obstetrics(family planning services)**
- **ENT**
- **Ophthalmology**
- **Pediatric Medicine**
- **Diagnostic Services** (Radiology C.T scan & mammography)
- **State of the art Clinical Pathology Lab 24/7**
- **Dedicated medical and surgical ICUs, Infectious disease, Dengue and TB wards.**
- **Free vaccination centre is available in the hospital.**
- **Rehabilitation centre**



MBBS Courses of Study

1st Year	2nd Year	3rd Year	4th Year	Final Year
<p>First year is being taught on Modular System with both vertical & horizontal integration in place. The course comprises of three modules with main emphasis on Anatomy Physiology Biochemistry</p>	<p>Second year is being taught on Modular System with both vertical & horizontal integration in place. The course comprises of three modules with main emphasis on Anatomy Physiology Biochemistry</p>	<p>1. General Pathology, Bacteriology Parasitology</p> <p>2. Pharmacology and Therapeutics</p> <p>3. Forensic Medicine and Toxicology</p> <p>4. Behavioral Sciences</p> <ul style="list-style-type: none"> • Ethics • Professionalism <p>Third year is also likely to be transformed into integrated system in 2025 as per advice of UHS.</p>	<p>1. Special Pathology</p> <ul style="list-style-type: none"> • Hematology • Clinical Chemistry <p>2. Community Medicine. Research Methodology</p> <p>3. Ophthalmology</p> <p>4. E.N.T.</p> <p>Instructional & Interactive teaching, practical training, bedside learning and teaching in the subjects of Ophthalmology E.N.T. Surgery and Allied Specialties Medicine and Allied Specialties</p>	<p>1. Medicine & Allied Specialities</p> <p>2. Surgery & Allied Specialities</p> <p>3. Obstetrics & Gynaecology</p> <p>4. Pediatrics</p> <p>Instructional & Interactive teaching, practical training, bedside learning and teaching in the subjects of</p> <ul style="list-style-type: none"> ➤ Internal Medicine ➤ General Surgery ➤ Obstetrics and Gynaecology ➤ Pediatrics ➤ Psychiatry ➤ Dermatology ➤ Pulmonology ➤ Anaesthesia ➤ Orthopaedics ➤ Urology ➤ Neurosurgery ➤ Trauma and Emergency Care ➤ Radiology ➤ Other sub-specialties like Oncology, Cardiology, Nephrology



Clinical Services

Pak Red Crescent Teaching Hospital is 500 bed, tertiary care hospital providing 24/7 clinical services in suburbs of Lahore

Patient turnover (2021-22) was:

- OPD more than 80 thousand
- Emergency almost 40 thousand
- Indoor almost 8 thousand

- **DENGUE Management:** A 50 bed ward is generated exclusively for Dengue patients.



BASIC DEPARTMENTS

Department of Anatomy

The department is well equipped with dissection hall and cadavers for anatomy dissection. Spacious Histology laboratory that contains multi-head, slide projecting binocular microscopes. State of the art Anatomy Museum having human body specimens and models with projectors. There is a facility to issue bones to students for study at Home/hostel . The department has adequate faculty and staff to facilitate the students.



Department of Physiology

Department is studded with highly qualified Faculty members. This department is well equipped with high-quality gadgets. The Mission of this department is to build a firm foundation for further learning and understanding of the forthcoming clinical subjects.



Department of Biochemistry

Department has very experienced faculty members and technical staff headed by a senior Professor. The departmental laboratory along with its preparation rooms equipped with essential instruments to perform practicals.



Department of Pathology

Pathology department fulfils both teaching and clinical diagnostic responsibilities, under the supervision of a highly qualified faculty and technical staff. This department is equipped with Pathology museum, four separate Pathology Laboratories, slide making facility , multi-head microscope and binocular microscopes for teaching purposes. Pathology department includes:

- **Histopathology**
- **Microbiology**
- **Chemical Pathology**
- **Hematology**

Pathology department in the hospital is equipped with the latest automated instruments to perform Different tests under a quality control program.



Department of Forensic Medicine

Forensic Medicine Department is supervised by a Professor and has qualified and experienced faculty. This department has well-furnished laboratory and museum, with a sufficient number of models, specimens, mountings, charts, skeleton and x-rays, highlighting various medical aspects essential for learning to keep abreast with advanced teaching in medical forensics.



Department of Pharmacology

Pharmacology department has a very strong faculty. It has a well equipped pharmacology laboratory and an animal house for experimental animals .



Department of Community Medicine

The department is engaged in imparting knowledge and skills to the medical students regarding the preventive, social, public and community health. The Department is headed by a senior Professor with PhD, along with other experienced faculty members. The departmental museum has requisite models and is well-equipped for students' practical demonstration under supervision of experienced faculty and health professionals. The regular field visits are an important feature of the subject curriculum. Students are coached for research work by assigning different projects.



Department of Behavioral Sciences

The department is headed by a senior Professor and experienced faculty. Clinical training is given in medical OPD for psychosocial aspects of management. Counseling and psychological support sessions are conducted for students as per need by qualified Clinical psychologist. Ethics, professionalism and communication skills are an integral part of the curriculum of MBBS.



Department of Medical Education

This is an independent department headed by a qualified medical educationist. It has been established to address the demands of advances in medical education. The department primarily focuses on activities that promote the development of faculty and students as educators and learners. A mentor program has been established under the supervision of this department. During this covid-19 pandemic, the department has established separate E-Learning and assessment programs for learners.



Skill Lab

A unique and distinguishing feature of this college is a state of the art Skills Lab. It has been made mandatory for all the 3rd year, 4th year, and final year MBBS students when they are on their rotations in the clinical wards. For pre-clinical years the skill lab provides the opportunity of practical learning on the mannequin. This lab is well equipped with advanced audiovisual system.



CLINICAL DEPARTMENTS

Department of Medicine

The department of medicine comprises of two units headed by senior Professors. This department is highly dynamic and passionate about students' education regarding clinical skills, diagnostic methodologies, basics and advances of therapeutics. It is ensured that the students are adequately trained about history taking, physical examination, interpretation of lab investigations under the guidance of faculty. The department aims at producing doctors competent enough to deal with community-related health issues. In this hospital, department of medicine is catering cases of emergency 24/7 and runs OPD 6 days a week with two consultant clinics and comprises of separate male and female general wards, medical ICU and tutorial rooms for clinical teaching of students.



Department of Cardiology

This department has a fully functional CCU headed by an Experienced professor with senior faculty .it provides 24/7 Services for cardiac emergencies through professionally trained staff. It runs 6 days a week OPD along with ECHO and ETT facility. This department is unique In the sense that this is the only coronary care unit in a 50 km radius providing services to the patients of cardiac diseases.



Department of Dermatology

The department is headed by an Assistant Professor and provides both indoor and outdoor facilities. The latest relevant equipment is available in the department. This department also caters patients of venereal diseases.



Department of Psychiatry

PRCM&DC has an independent Psychiatry department, headed by an Assistant Professor. It is providing mental health cover to the surrounding community. It also provides help in addressing any psychological issues faced by students or employees.



Department of Radiology

This department is headed by a senior faculty member with trained technical staff. Diagnostic wing of any hospital is considered vital in any clinical setting. The department of radiology is loaded with modern diagnostic equipments such as digital/portable X-ray machines, Ultrasound machines with color Doppler facility. CT Scan and Mammography installation is a major achievement of this department.



Department Of Surgery

It comprises of two surgical units each headed by a Professor. It runs six days a week OPD, two consultant clinics, male & female general wards, operation theatres with pre and post-operative facilities, surgical ICU and round the clock emergency services.

The field of surgery is an essential part of medical teaching while providing excellent health care facilities to the patients. Clinical training in this department starts from the third year and continues up to final year. All kinds of surgeries including elective, emergency and laparoscopic procedures are performed.



Department of Orthopedics

Pakistan Red Crescent Hospital has a fully functional orthopaedic department under the supervision of senior faculty. Separate male and female orthopaedic wards are having a strength of 40 beds. The operation theatre is equipped with all the modern equipment for relevant surgical procedures including application of implants.



Department of Urology

The urology department is headed by a Professor and it provides both indoor and outdoor facilities for urological patients. All kinds of related surgeries including endoscopic procedures are performed. The hospital plans to establish a dialysis centre very soon.



Department of Pediatric Surgery

Pakistan Red Crescent Hospital has a unique facility for pediatric surgery headed by a Professor having both indoor and outdoor facilities. All kinds of emergencies and elective surgeries are being performed by senior faculty.



Department of Anesthesia

The anesthesia department is one of the best departments having two Professors and other senior faculty members. It provides round the clock cover to emergency operation theatres and the major operation theater complex comprising five operation theaters. The department of anesthesia runs a fully equipped surgical ICU in addition to Pre-operative and Post-operative care.



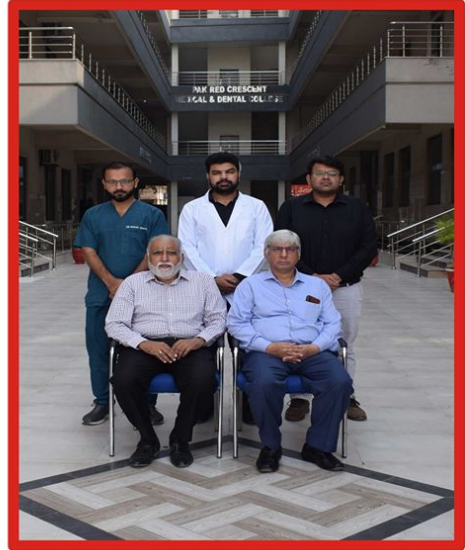
Department of Gynecology & Obstetrics

Department is committed to play its role in reducing maternal mortality by providing quality health services. It aims to produce professionally sound and competent doctors. It has two units comprising of experienced faculty members and headed by Professors. The department of gynae & obstetrics runs OPD 6 days a week, with two consultant clinics and 75 bed inpatient department along with the facilities of operation theatres and labour rooms functional 24/7. The department has all the relevant equipment along with ultrasound and CTG facility. Family planning services are also available.



Department of ENT

The department is headed by senior Professors. The department has both indoor and a 6 days per week OPD facility. All kinds of major and minor procedures are being performed here in a well equipped Operation Theater.



Department of Pediatric Medicine

The department headed by Professor is providing care to neonate, infant, child and adolescent patients. This department has an indoor facility along with neonatal ICU. The OPD and Indoor are looked after by experienced and qualified doctors along with trained staff nurses. There is a 24-hour emergency service for pediatric and neonatal patients. This department is equipped with incubators and ventilators in NICU for critical Patients.



Department of Ophthalmology

Department of Ophthalmology is well equipped to perform routine eye operations and procedures including cataract surgery with Phako and IOL. The department has 6 days a week OPD and consultation. It is headed by Professor, supported by senior faculty members. This department is well equipped with the latest technology.



Department of Accident & Emergency

It is a vital and essential part of Pak Red Crescent Teaching Hospital. It caters for all kind of emergencies including medical, surgical, cardiac, paediatric, gynaecological and orthopaedic emergencies 24/7. A five bed CCU is attached to the emergency room in addition to two fully equipped operation theatres and ten special care beds with all necessary equipment also providing Radiology and Pathology Lab cover. An experienced Professor of Surgery is HOD and designated CMOs are available. All clinical units cater for emergency patients round the clock. ER Pharmacy remains open 24/7.



The Faculty



The Administration



Hostel Facilities

The medical college has an appropriate number of furnished rooms to provide hostel accommodation to the students, intending to reside. Separate hostel accommodation is built for boys and girls within the premises. Mess facilities are provided in the hostel for boys and girls separately. Airconditioning facility is provided on request with additional electricity charges.



The administrative Structure for hostels

There are separate wardens for boys' and girls' hostels. Student's management committee looks after hostel messes in consultation with warden. There is a homely and secure environment in hostels. The wardens are of professorial rank. Security services are ensured by actively trained guards. Janitorial staff is available round the clock.

Hostel Rules and Regulations

- The students have to abide by the rules promulgated by the Principal from time to time.
- Students are not allowed to keep fire arms or narcotics in their hostel rooms / college premises.
- Each Student is allowed to have only four blood relatives as visitors / guest to see him / her in the hostel, as authorised by parents / guardians(List will have to be Submitted at the time of admission).
- **No Guest is allowed to stay over night in the hostels.**
- Unauthorized students will not be allowed to live in the hostels. If such case is reported, strict disciplinary action will be taken against the students who accommodates unauthorized guests.
- No female guest is allowed in the boys' hostels and no male guest is allowed in the girls' hostels.
- Defaulters will not be allowed to reside any longer in the hostel.
- Any student guilty of misconduct and violation of hostel rules regulations will be expelled from the hostel by the Principal on the advice of hostels' warden.
- The students will have to pay extra dues for additional use of electric appliances like Air-conditioners, refrigerators, microwave ovens, heaters etc.
- The wardens do ensure an appropriate and excellent standard of cleanliness.



Timings Of The Hostels

Boys' Hostel

All students should be present in their rooms by 8:00 pm. Warden (or his representative) will check the presence of students in their rooms at 8:15 pm. The name of absent students will be reported to the authorities. Study timing from 8pm to 11 pm will be observed by students and monitored by the warden.

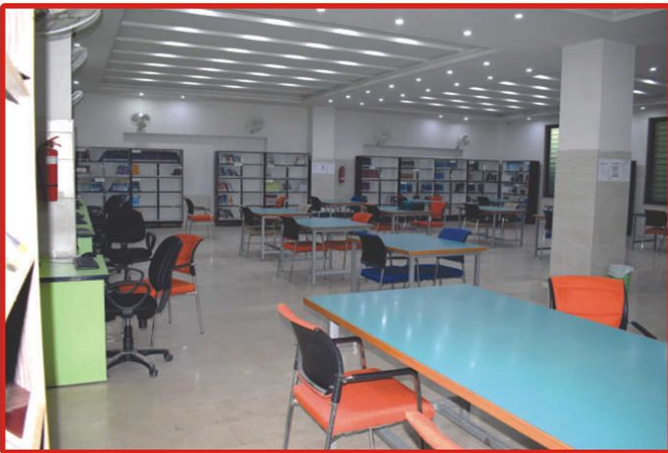
Girls' Hostel

All girl students should be present in the hostel rooms/premises by 8:00 pm. Warden (or her representative) will check the presence of students in their rooms at 8:15 pm. They shall provide a list of visitors duly approved by their parents or guardians to the Warden. A register of arrival & departure timings will be maintained by the warden for the girls students going out of the hostel in the afternoon or leaving the hostel for their homes.



Library

The college has a well-established centrally air-conditioned library. It has all essential medical books needed for medical students and faculty. A general section of the library has daily newspapers, books on religion and Pakistan Studies, to update the students and faculty. The library has educational CDs, DVDs and a portal of digital library connected to HEC digital library. It is equipped with thirty-five computer work stations with the facility of internet. A well-trained librarian along with other staff has been appointed in the library to facilitate the students as well as faculty members. The library remains open from 8:30 am to 10:30 pm. The students are encouraged to utilize the library facilities as all the recent editions of important books are available. Moreover, important scientific journals are also available in the library for students and faculty.



Cafeteria

The cafeteria is available in the premises of the medical college to provide excellent quality food on reasonable charges. The cafeteria is supervised by the senior administration. Event management services for functions are also provided by the cafeteria. A tuck shop is also present in the hospital premises.



Transport

Transport facility for students includes air-conditioned coaches. The facility is provided throughout the city on nominal charges.



Security System

A well-developed security system is present with walk-through gate and 24 hours security guards within the campus.



Co-Curricular Activities

The college provides opportunity for co-curricular activities including:

- Sports (Indoor & Outdoor games)
- Club activities
- Societies activities
- Study tours
- Welcome to the incoming first-year and, farewell to outgoing final year
- Annual Dinner
- Eid Milad ul Nabi celebrations
- National Day celebration
- Inter-collegiate competitions



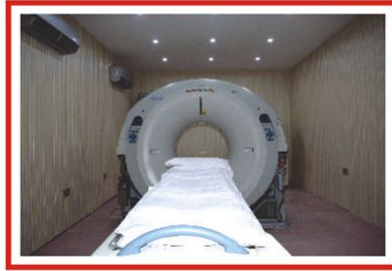
Seminars And Workshops

Seminars and workshops are arranged on regular basis for Continued Medical Education



Gallery







ADMISSIONS

ADMISSION POLICY WILL BE FOLLOWED AS PER THE DIRECTIVE OF PAKISTAN MEDICAL & DENTAL COUNCIL (PM&DC) AND UNIVERSITY HEALTH SCIENCE (UHS).

Bank Details.

Tuition Fee

Habib Bank Limited

Title of Account: PRCM&DC

Account Number: 1417790023380-1

Branch Dinna Nath

For Further Information:

Contact No: 049-4540331

Mobile No:0321-9769750 (Monday to Saturday, 8.30a.m to 2.30p.m)

Address: Pak Red Crescent Medical & Dental College Dina Nath 48 Km, Multan Road ,Lahore



Pak Red Crescent Medical & Dental College Fee Schedule for Local & Foreign Students

PAK RED CRESCENT MEDICAL & DENTAL COLLEGE						
Fee Schedule For Local Students 2024-25						
Fee Schedule & Charges	Session (2025 to 2030)					
	Year 1	Year 2	Year 3	Year 4	year 5	Total
	Amount (Rs.)	Amount (Rs.)	Amount (Rs.)	Amount (Rs.)	Amount (Rs.)	Amount (Rs.)
Tuition Fee	1,643,000	1,766,000	1,899,000	2,042,000	2,195,000	9,545,000
Ancillary Fee*	440,000	361,000	389,000	417,000	450,000	2,057,000
Total Fixed Fee Per Annum (Without Tax)	2,083,000	2,127,000	2,288,000	2,459,000	2,645,000	11,602,000

Optional Charges (not included in tuition & ancillary fee)

Amount (Rs.)

Hostel Charges Annually

180,000

PAK RED CRESCENT MEDICAL & DENTAL COLLEGE						
Fee Schedule For Foreign Students 2024-25						
Fee Schedule & Charges	Session (2025 to 2030)					
	Year 1	Year 2	Year 3	Year 4	year 5	Total
	Amount (USD)	Amount (USD)	Amount (USD)	Amount (USD)	Amount (USD)	Amount (USD)
Amount in US Dollar						
Tuition Fee	18,400	19,780	21,264	22,858	24,573	106,874
Ancillary Fee*	3,000	2,468	2,591	2,721	2,857	13,637
Total Fixed Fee Per Annum (Without Tax)	21,400	22,248	23,855	25,579	27,430	120,511

Optional Charges (not included in tuition & ancillary fee)

Amount (USD)

Hostel Charges Annually

2,400



Pak Red Crescent Medical & Dental College

Detail of Ancillary Fee 2024-25 (2025-2030)

	Year-1	Year-2	Year-3	Year-4	Year-5
Admission Fee	50,000	-	-	-	-
UHS Registration Fee *	24,000	-	-	-	-
PM&DC Registration Fee *	15,000	-	-	-	-
Documents Verification Fee *	15,000	-	-	-	-
5.5% UHS Administrative Charges	90,365	97,130	104,445	112,310	120,725
Co-Curriculum Activities	100,000	108,000	116,000	125,000	135,000
Resource Centre Charges	85,000	91,000	98,000	105,000	113,000
Transportation regarding UHS Exam & Academic Tours	60,635	64,870	70,555	74,690	81,275
Total Ancillary Fee	440,000	361,000	389,000	417,000	450,000



Examinations

- ✦ The college will strictly follow the schedule of examinations issued by UHS.
- ✦ Before each university examination, there will be a send-up exam on university pattern.
- ✦ The College reserves the right to hold back the admission for annual exam for any student who fails in the sendup exam.
- ✦ An essential requirement for eligibility to appear in the university examination will be at least 75% Attendance of the student in all the theory & practical classes held during the teaching session in every subject including clinical rotations.
- ✦ Any students who secures 75% attendance to appear in the exam shall carry his eligibility in the subsequent exam even if he/she is detained.
- ✦ Criteria for eligibility to appear in university examination, as laid by the University of Health Sciences, Lahore will be strictly followed.
- ✦ The students must have cleared all the College dues , Hostel dues, Canteen dues, University examination fee and any fine imposed upon him/her by the college before their name is sent to UHS as an eligible candidate.



Discipline

To keep a congenial and academic environment in the medical college, hostels and teaching hospital, following disciplinary rules will be enforced:

- ✦ Any type of ragging with new first-year MBBS Students is strongly prohibited both in college and hostel premises. Strict disciplinary action will be taken against the offenders. Punishment may extend to expulsion of offender from the college for a certain period of time or even permanently.
- ✦ The college discipline is monitored by the Disciplinary Committee (DC), comprising senior faculty members. Any act of indiscipline committed by a student/group of students, will be brought into notice of DC who will conduct a detailed inquiry of the matter and submit its findings and recommendations. The Chairman of DC committee, in liaison with the Principal will ensure impartiality of the enquiry & decision.

The Principal will implement the recommendations of the DC, however Principal can the Amend/ excuse the punishment recommended by DC after consulting the appeals committee

- ✦ A minor act of breach of discipline will be referred to a vigilance committee for probing and deciding punishments. The vigilance committee will also supervise the students about their behavior in the college, dress code and attendance in classics.



Students are required to observe the following rules during their stay in the college.

- ✦ Students are forbidden from indulging in any political, partisan or sectarian activity in the college and its Affiliated hospital, or in the hostels. Even any political or sectarian discussion is strictly prohibited.
- ✦ Unauthorized absence from the class will be considered a serious breach of conduct. In case of illness, students will be required to submit a medical certificate from the concerned faculty of PRCTH or a registered medical practitioner.
- ✦ Students commuting by the college transport are required to maintain discipline in the vehicles while commuting to and from the college. Any damage caused to the vehicle by the students will result in severe action, including but not limited to paying the cost of necessary repairs.
- ✦ Any damage caused to the property of college or affiliated teaching hospital and hostels which includes laboratory equipment, furniture & fixture, canteen, library books, plantation etc. or any other thing in the premises of PRCM&DC, will be considered as a serious act of indiscipline and students will be asked to compensate as determined by the appropriate authority.
- ✦ All students must remain in college premises during College hours. Anybody venturing out in the surrounding areas will do so at his/her own risk and will be liable for necessary disciplinary action.
- ✦ All students must display their college ID cards in college premises.
- ✦ Wall chalking is strictly prohibited and necessary action will be taken against those students who are found indulged in chalking the premises.
- ✦ Smoking is strictly prohibited in college / hostel premises and affiliated hospital.
- ✦ The student must follow the dress code of the college, as notified by the college administration from time to time, violation of college dress code will result in disciplinary action against the defaulters.
- ✦ The students found misbehaving with any faculty member or administrative staff will be dealt with as per disciplinary rules.

Note: The College authorities reserve all the rights to amend, change or modify these rules any time without giving any prior notice.



Code of Conduct

- Cheating, social misconduct or infraction of college rules, stealing, destruction of the college property, use of physical force against other students/ patients/ staff, use of drugs, possession/use of weapons, inciting disturbance / strikes , repeated absence without permission from classes /clinics/ Laboratories will be referred to the college disciplinary committee which after investigation will recommend appropriate action. It may result even in removal of students' name from the college roll.
- Students are expected to attend all classes, demonstrations, practical and clinical teaching sessions. Attendance and academic record of every student are properly maintained by the respective teaching departments and students' affair section of college secretariat and a copy of each record shall be posted to the parents / guardian on quarterly bases for their information. Feedback from the parents will be appreciated.
- It is mandatory for the students, as per college and university of health sciences rules to have at least 80% of the total academic year attendance to be eligible to appear in the university professional examinations. The submission of admission forms of those students whose attendance is less than 80% will not be forwarded to the university.
- Students should not expect grant of leave of absence during working days except in case of an emergency.
- All leave applications must be addressed to the Principal in writing for sanction.
- The college is not liable for any loss of valuables during the student's tenure at the Pak Red Crescent Medical & Dental College. Students are requested to safeguard their own belongings.

Dress Code

Boys' Trousers, Shirt, Shalwar Qamees and Shoes. (CHAPPALS are not allowed)

Girls' Qameez shalwar / Trousers which should be decent and of appropriate lengths (proper and well suited to our cultural requirements)

Students must wear the white coats in the college premises.



Pakistan Red Crescent Society

PRCS is a statutory body constituted and governed by an “Act of Parliament”. It was founded in Pakistan on December 20, 1947 by an order called “The Pakistan Red Cross Order” issued by Quaid-e-Azam, as Governor General of Pakistan and as Founding President of the Society. Pakistan Red Crescent Society became part of the ICRC (International Committee of Red Cross) on 21st July 1948 and was admitted as member of IFRC (International Federation of Red Cross) on 18th August 1948.

President of PRCS Punjab: Mr. Baligh Ur Rehman (Honorable Governor of the Punjab)

Chairman PRCS Punjab: Justice (R) Sheikh Ahmed Farooq



PAKISTAN RED CRESCENT SOCIETY

MISSION

“To alleviate the sufferings of the most vulnerable population by mobilizing the power of humanity”.

VISION

“To be the leading humanitarian organization of Pakistan, which is dynamic, self-reliant and committed to preventing and alleviating human sufferings at the national and international level, while acting in compliance with fundamental principles and humanitarian values of the Red Cross and Red Crescent Movement”





Contact:
Department of Student Affairs
Land Line: +92(49)4540331 (Ext. 206)
Email: studentscoordinatorprcmdc@gmail.com